

The Mayor's Transport Plan

4 November 2025



Introducing the East Midlands Combined County Authority



- We are a locally led, democratically accountable body bringing together leaders from across Derbyshire, Nottinghamshire and their cities, under the leadership of the region's first directly elected **Mayor, Claire Ward**.
- We are diverse - from our cities to our Peaks
- We represent over two million people, a £60 billion economy and 80,000 businesses.
- Our purpose is to act as a single strategic voice for the East Midlands nationally and internationally, while delivering practical change locally.
- Established in May 2024, our governance is grounded in partnership.

EMCCA's Inclusive Growth Framework

One core mission and six supporting Ambitions:

Our core mission is that by 2040...

- Every resident will be proud to call the East Midlands home.
- All young people will have a fair start and a clear path to progress.
- A thriving, green, and inclusive economy will improve health and wellbeing.
- Opportunity will be widened regardless of postcode.
- All residents will be empowered to shape their places and future.

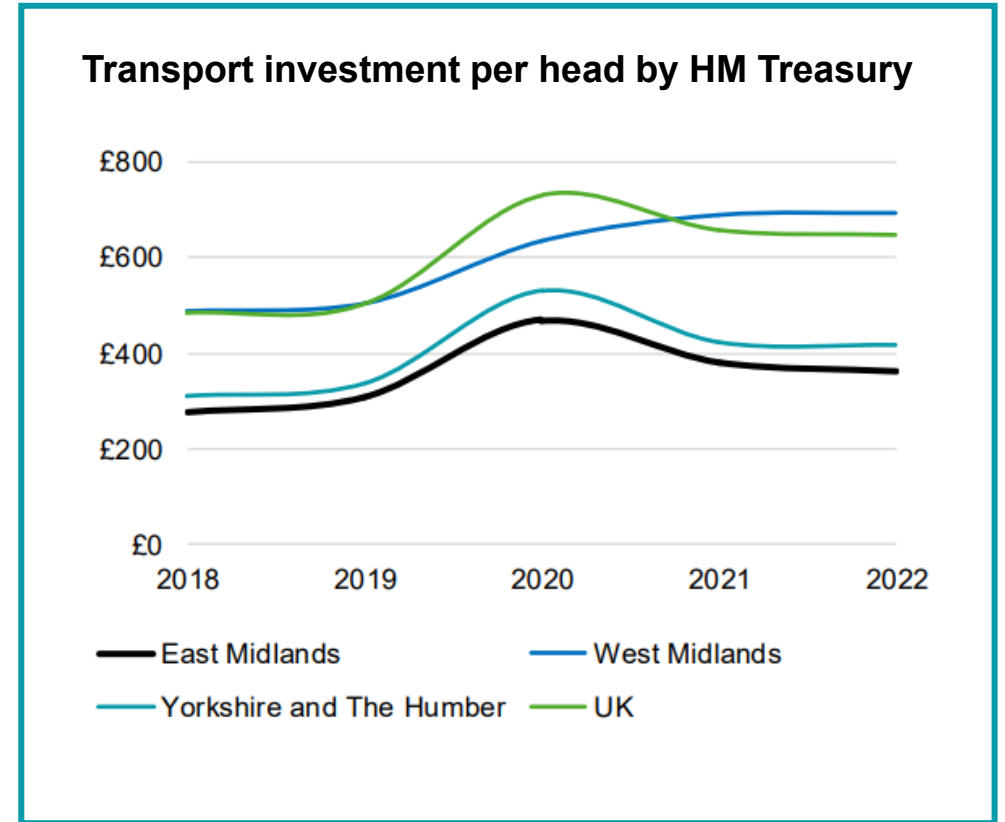


Connected Communities Ambition:

By 2040, communities in the East Midlands will benefit from reliable, inclusive and sustainable connectivity, through integrated transport and high-quality digital infrastructure, broadening access to opportunity and reducing reliance on private cars, while driving investment across the region.

We're bringing a step-change in new investment for transport

- Addressing generations of under-investment in transport in the East Midlands
- In June, Department for Transport awarded us '**Transport for City Regions**' funding: **£2 billion for the period to 2032.**
- Mainly capital funding.
- The 2025-26 transport investment programme is in delivery
- This new funding represents a genuine step-change in levels of capital funding for transport in the region.



The Mayor's Transport Plan – a Local Transport Plan for the region

- We have a brilliant opportunity to advocate with one voice, to improve transport in our region
- EMCCA is now the Transport Authority for the region and will develop a Local Transport Plan
- The Plan will look ahead 15 years to 2040.
- **The Mayor's Transport Plan sets the strategic direction for transport in the region, and sets the framework for investment.**
- Our plan needs to reflect our geography and resonate with our unique places and communities.

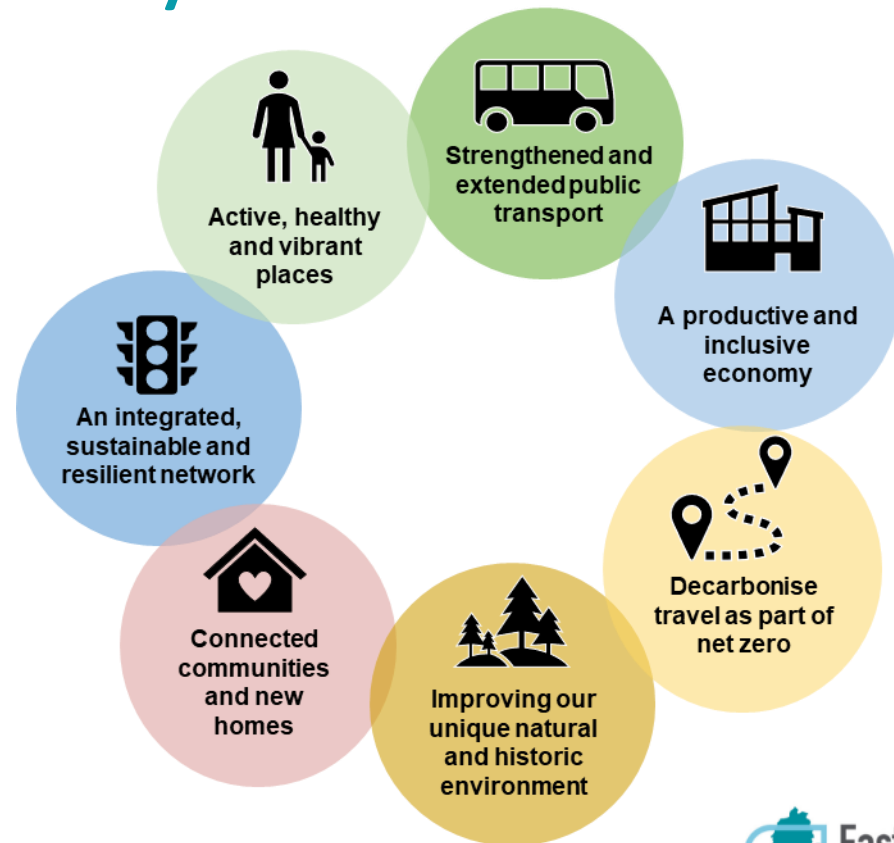


The aim is a transport system that is affordable, easy to use and sustainable, so everyone can access the opportunities and services they need

Seven strategic goals, across four themes:

- Increasing modal choice
- Better connecting communities
- Creating greater economic opportunity
- Protecting our environment

22 Policies that deliver the goals.



The Mayor's top three transport priorities:

- To make travelling by public transport easier and more affordable
- Connecting communities by giving people travel choices that go beyond reliance on the private car
- To bring our highways into a good state of repair, so they can offer reliability despite changing travel demands and a changing climate



What we will be publishing in November:



1. Mayor's Transport Plan Discussion Document
2. Executive Summary and Easy-read accessible format document
3. Evidence Base
4. Consultation questionnaires – for individuals and organisations

We're seeking feedback as we develop the Transport Plan

- We've been analysing the evidence, and understanding opportunities and challenges for transport in our region – for today and into the future.
- The Mayor's Transport Plan will be a comprehensive plan. So, we will have two stages of consultation.
- **Stage 1 consultation launches in November**, with a High-level Discussion Document.
- We will seek your feedback on whether:
 - you recognise the challenges and opportunities outlined, now and for the future
 - you agree we have adopted the right strategic goals for the region
 - the policies presented are the right ones to help us achieve the goals.
- Your contributions will inform development of the Full Transport Plan next year.



Consultation activity

- 12-week consultation beginning late-November
- Online questionnaires to capture responses
- Public exhibitions across the region
- Workshops with partners and stakeholders
- Sessions with existing groups
- Focus Groups to fill gaps

Please participate and push with your networks!

Transport affects all of us in many ways. We want to hear from as many voices as possible, before we do the more detailed development of the full Plan.

➤ **Who can you share it with and encourage to engage?**





Questions and discussion

CLAIRE WARD
MAYOR OF THE
EAST MIDLANDS

